



IMPACT YOUTH...BUILD A LEGACY CAMPAIGN CASE FOR SUPPORT



**Sergeant Henry
Prendes**



A HERO CAME ALONG...

On Feb 1, 2006 Las Vegas Metro Police Sergeant Henry Prendes responded to a domestic violence incident and was fatally gunned down. Before his death, Sergeant Prendes and his wife, Dawn, had begun planning and acquiring land to build a camp for youth. Henry had a singular vision for this camp: to offer life-changing experiences to urban youth.

In the aftermath of that tragic February day, friends and supporters rallied around Dawn, encouraging her to keep Henry's dream alive. Out of their encouragement and support was born "Henry's Place" a camp that will bring amazing opportunities at no cost to at-risk youth who would normally never be able to afford to go to camp.



Sergeant Prendes was killed by a violent man who had lost his way. What if that man had been given a chance to have his life changed when he was a youth? What if someone had taken him to camp, loved him, and shared the positive impact of right choices and a relationship with God? We can only imagine that such an opportunity could have prevented the tragic course of events that took place on that fateful day in 2006.

Henry's Place Camp exists to help prevent such tragedies and to honor the sacrifice of fallen Police Sergeant Prendes by providing free, life-impacting camp experiences for Las Vegas youth.

OUR MISSION

TO HONOR THE SACRIFICE OF FALLEN POLICE SERGEANT PRENDES BY PROVIDING FREE, LIFE-IMPACTING CHRISTIAN CAMP EXPERIENCES FOR AT-RISK LAS VEGAS YOUTH.

THIS IS HIS LEGACY...

Way back in 1986 Henry Prendes, a young man growing up in urban Las Vegas, went to a summer camp, and the experience forever changed his view of the world. His time spent at camp helped to set the course of his life as one of love and sacrificial service and inspired his future dreams of providing similar camp experiences for youth. However, on that tragic day in 2006, it seemed that Henry's dream had ended with a criminal's bullet.

But God had a plan, and even through tragedy He was working a story of incredible hope. Since 2016, Henry's Place has utilized rented and donated facilities and volunteer staff to conduct week-long summer camps for less fortunate Las Vegas youth. To date, scores of at-risk youth have been blessed with free camp programs, and the results have been life changing.



12-year-old Johnny came to Henry's Place in 2016. Shortly after arriving at camp, he said, **"I can't wait to turn 16 to quit school and get a job...we need money."**

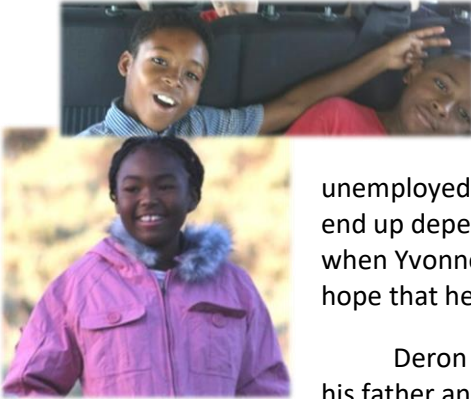
Johnny was deeply impacted by his week of camp. A few months after camp, Johnny told a Henry's Place Board Member, **"I've decided I'm going to stay in school. I want to work really hard and go to college..."**

Today, Johnny is doing well, volunteering at a local church, earning awards in school, and looking forward to his future.

That's the kind of life-impact that Henry's Place is all about!



...THESE ARE "HENRY'S KIDS"!



Yvonne came to Henry's Place when she was 10 years old. She has no meaningful relationship with her father and lives in Las Vegas' "Naked City" area in a small apartment with 8 siblings. Statistics show that Yvonne is more likely to drop out of school, to be unemployed, to be arrested, to be an unwed single parent, and to end up depending on government assistance as an adult. However, when Yvonne came to camp she heard, and embraced, a message of hope that her personal choices will make a difference in her life.



Deron lives with his grandmother because he is estranged from his father and his mother is unable to care for him. He is growing up in a world with extraordinarily strong pressure to enter gang life. If he joins, statistics say that he has a very high chance of ending up dead, in prison, or maimed for life. When Deron came to Henry's Place in the summer of 2017, he was angry and combative, but by the end of the week, his heart had softened, and he had a changed perspective and new hope for his future.



Mason is growing up in a single-parent household. Although his mom loves him dearly and works diligently to provide for him and his sister, their economic circumstances just never would have allowed Mason to go to a summer camp. So, when Mason came to Henry's Place, it was the chance of a lifetime for him, and Mason was able to enjoy new experiences. He left camp talking about his desire to live a life devoted to others.



Yvonne, Deron, Mason, and all the faces you see on this page are "Henry's Kids". They are young, intelligent, fun-loving children who have a high probability of ending up as the kind of adults that will view officers like Sergeant Prendes as an enemy and not as an ally. These youth have economic challenges, but those challenges ARE surmountable. They have negative social influences, but those influences CAN be overcome. Henry's Kids aren't "troubled kids"...they are "children of promise" who need people like Sergeant Prendes who are willing to sacrifice to give them a better opportunity.



"I grew up in a poor home, with an alcoholic, abusive single father... You saved my life; through all my pain and sorrow, I learned that the world is more than what I had seen. I was able to be a child and learned to love and be loved through your volunteers and staff."

- Testimonial from a woman impacted by camp



HENRY'S KIDS NEED MORE HEROES!

Sergeant Prendes left a legacy because he was a good man who chose to make a difference. His selfless service set a tremendous example when he made the ultimate personal sacrifice out of a sense of duty to his fellow man. Now is the time to honor that sacrifice. In doing so, you won't just be building Henry's legacy, **you will be building yours as well.**

For over 10 years, Henry's Place has grown from the seed of an idea into a fully-functioning camp, and Henry's Place is poised to realize the vision of impacting thousands of at-risk youth. Our **Impact Youth...Build a Legacy** campaign will bring together the necessary resources to establish Henry's Place as a full-time camp that, when fully built, will enrich the lives of almost 500 disadvantaged children each summer.

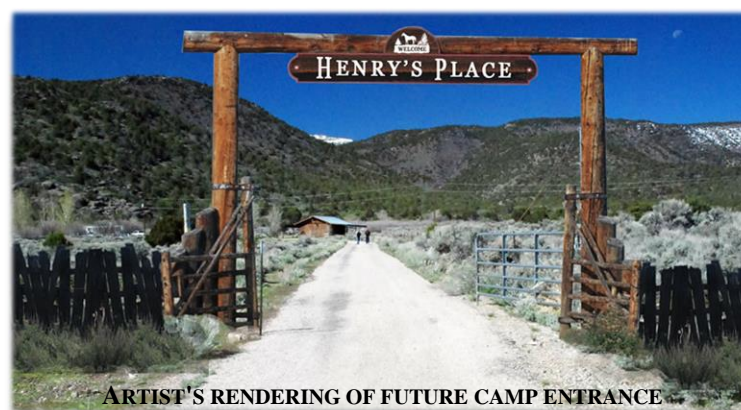
This campaign is not just about honoring Henry. It is about partnering together in both work and personal sacrifice to build a legacy for our communities and our families. That legacy is built through commitment to use our own resources to benefit needy children who don't have resources of their own...benefits that will be felt for generations to come.

Your support can:

- **Impact Youth** by providing the necessary means for disadvantaged children to hear a message of hope, to experience love, and to be immersed in the beauty of God's creation.
- **Continue Sergeant Prendes' Self-sacrificial Legacy** by making the dream of Henry's Place into a reality.
- **Further Your Own Legacy** or that of someone dear to you by becoming a Naming Donor of one of our facilities. Let your name be a legacy that impacts thousands of children.

Share in our vision to build a camp that will change the lives of at-risk urban youth. We ask you to prayerfully consider making a commitment and/or becoming a Naming Donor.

BE A HERO FOR HENRY'S KIDS!!



THE CAMPAIGN PROJECT

CAMPAIGN GOAL: \$3,150,000*

Our *Impact Youth...Build a Legacy* campaign will build the essential facilities that will permit Henry's Place to provide life-changing camp experiences to children who would not otherwise have a chance to go to camp. There are countless at-risk youth in urban Las Vegas who, even as you read this, need to experience the love and hope that Henry's Place will provide. Through generous donations of land, funds, and labor, the past years have seen all the essential groundwork laid for camp to begin at Henry's Place. The last hurdle that must be cleared to start impacting youth lives is the construction of buildings.

With your involvement, this campaign will provide the resources necessary for Essential Facility Construction, to establish a Critical Growth Fund, and to create a Legacy Endowment.

"Camp has impacted my life immensely. I was in a very bad spot when I came to you guys, and you helped me see that God is still there to love me and help me through the hard times..."

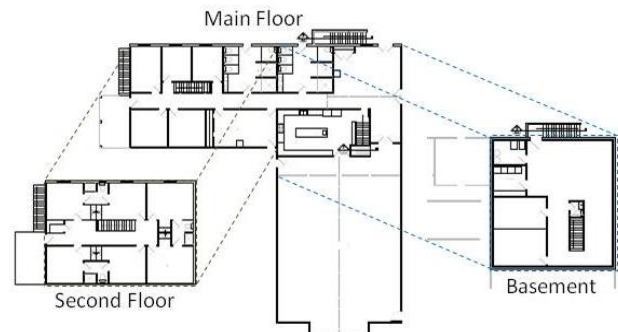
Lindsey,
May 6, 2015,
reflecting on her
experience at a
summer camp

ESSENTIAL FACILITY CONSTRUCTION:

The Lodge and Pool - \$2,600,000

The focal point of Henry's Place Camp is the main lodge. The lodge will include a great room, a commercial kitchen, lodging rooms, restrooms, multi-use spaces, utility rooms, the camp office, a laundry room, and storage areas. Immediately behind the lodge will be a swimming pool for campers to utilize during camp -- a welcome feature given that the camp's summer temperatures can rise into the upper 90's.

The main lodge has been designed with an eye toward efficiency and functionality. It is sited at a central location that allows it to work well as the focal point of the camp. Its great room will double as both a dining hall with an adjoining commercial kitchen and as a meeting hall with full audio-visual support to enhance teaching. Lodging rooms are built specifically to accommodate camp staff during summer camp and to be functional for retreat attendees during other times of year. Realizing that it is important to have buildings that fit with the natural beauty of the camp location, the lodge is designed to optimize views with an open floor plan. Finally, the lodge will establish the "ranch" architectural theme for the camp -- a theme chosen because it is aesthetically appealing but avoids high-cost and high-maintenance architectural design details and landscaping.



Main Lodge Design



* Does not include the Legacy Endowment

Two Cabins - \$75,000 Each

This campaign will provide funds for two camper cabins (part of a total of six cabins planned during all building phases). Each of the 500 square foot cabins will have sleeping bunks for 10 (two counselors and eight campers), a restroom, and a covered porch where cabin groups can play, share, and interact. Cabins are the nexus of a camper's experience -- their "home" while they are at Henry's Place and the place where they will build the closest relationships. It is within the walls of these



Cabin Design



UPDATE: Our cabins were completed in 2021!

cabins that many campers will develop lifelong bonds with their counselors and with their cabinmates. The cabins are simple but not austere in design and will be crafted to look like ranch bunkhouses.

Water System - \$200,000

Our current water source is unable to provide for camp needs. Accordingly, this capital campaign includes funds for engineering and construction of a new well and associated water system.

CRITICAL GROWTH FUND:

Clearly, free camp experiences require not only structures but also operating capital. To meet this need, this campaign will establish a Critical Growth Fund to permit Henry's Place to immediately reach out to youth and accomplish the mission of impacting lives. The initial years of a non-profit organization are the most challenging financially, and prudent planning will ensure the viability of the camp. Good stewardship demands that we secure Henry's Place's future. To ensure both the success of the camp and full utilization of our facilities, the **Impact Youth...Build a Legacy** Critical Growth Fund will include an initial operating fund as well as a campership fund.

Initial Operating Fund: \$100,000

The initial operating fund will provide working capital to fund the first two years of operations at Henry's Place. During this time, Henry's Place will cultivate and enlarge our base of annual donors to ensure the long-term sustainability of the camp. At the same time, Henry's Place will have the opportunity to develop customer market-share for its retreat season. Retreat activities will generate income that will be used to offset the costs of free summer camps for at-risk youth.

Campership Fund: \$100,000

"Camperships" (camp scholarships) ensure that campers will have life-impacting opportunities even in times of economic challenges. The **Impact Youth...Build a Legacy** campaign goal is to find sponsors for 200 campers. Each \$500 campership will provide a summer camp experience for an at-risk child. By making a campership contribution, you will guarantee that Henry's Place will provide free camp experiences for the maximum number of disadvantaged youths.

THE LEGACY ENDOWMENT:

Of course, it takes more than hard work and facilities to sustain the legacy of Sergeant Prendes and impact lives for the long term. Offering *free* camp programs to at-risk youth will require a significant annual income, and so Henry's Place seeks to establish a **Legacy Endowment** to ensure continuing income stream to finance operations. When coupled with the generosity of our regular donors and supporters, a **\$1,500,000** endowment will provide the dependable operating capital that will allow Henry's Place to fully utilize its facilities. The Legacy Endowment will secure the future for Henry's Place, ensuring that we can continue to bring positive camp experiences to youth year after year.

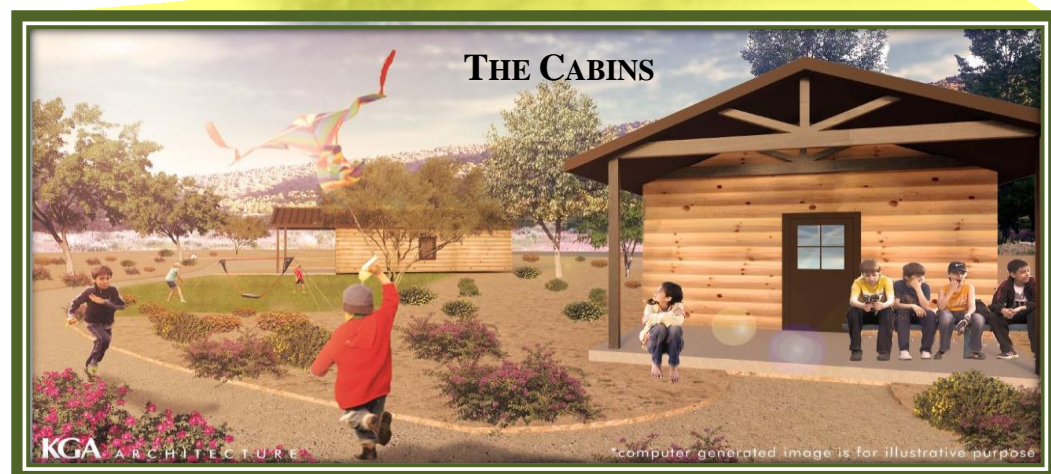
PROJECT RENDERINGS



WATER SYSTEM



HENRY'S PLACE SITE PLAN





NAMING OPPORTUNITIES

Part of **"Building a Legacy"** is making a name known. By naming one of our facilities for yourself or someone you love, your generosity will be evident to posterity, and you can inspire others for generations to come. You can take advantage of one of the Naming Opportunities offered below, with a contribution at or above the designated amount.

Campus Name\$1,000,000

Every time a camper or visitor comes onto the Henry's Place campus, they will see your name at the entry to Henry's Place. As the Campus Naming Donor you will be recognized for your invaluable contribution to making all of our indoor and outdoor facilities available to impact the lives of disadvantaged youth!

Endowment Name.....\$1,000,000

Our Legacy Endowment will provide capital that is essential to our ability to provide free camp opportunities for those who wouldn't otherwise be able to come to camp. The Legacy Endowment will ensure that Henry's Place is able to serve thousands of campers.

The Lodge\$500,000

The lodge is the centerpiece of Henry's Place Camp. Here campers will hear life-impacting messages, eat great food, and enjoy fun and exciting games.

Cabins\$75,000 each

Our cabins will serve as "home" for children at camp. Each 500 square foot cabin will have ten bunks, a bathroom, and a covered porch for group activities.

The Pool\$50,000

With summer temperatures in the 90's, our pool will provide campers with a great opportunity to play while cooling off from the summer heat.

The Lodge Great Room\$50,000

The Lodge will include a 2240 sq ft multipurpose Great Room which will serve as a place for teaching, music, eating, and fun activities.

The Amphitheater\$30,000

Songs, skits, and laughter will be heard around the campfire in our outdoor Amphitheater. With a large stage and space to seat up to 200, the Amphitheater is the perfect place for our campfire program.

The Challenge Course\$15,000

At our outdoor Challenge Course, campers will experience eleven exciting mental and physical obstacles. They will have great fun while learning lessons in teamwork, communication, and perseverance.

Lodge Rooms\$10,000 each

The Lodge's eleven guest rooms will provide staff and guest housing, and the sitting room will serve a variety of purposes including meetings, teaching, and a place to rest and reflect.

Notes:

- We will honor naming opportunity requests in the order received and will notify donors if their choice is not available.



WAYS TO GIVE TO HENRY'S PLACE

To GIVE	DO THIS
CASH	Give by check or other means of giving cash.
SECURITIES	Send an unendorsed stock certificate in one envelope and a signed stock power form in another envelope. The gift is complete on the postmarked date of the later envelope.
PERSONAL PROPERTY GIVEN FOR A RELATED USE	Deed or deliver property to Henry's Place.
REAL ESTATE	Deed real property to Henry's Place. Alternatively, bequeath a remainder interest in real property to Henry's Place.
OIL, GAS, AND MINERAL INTERESTS	Donate full ownership interest or assign royalty stream from mineral interests to Henry's Place.
CHARITABLE GIFT ANNUITIES	Establish an annuity agreement with Henry's Place and make a lump-sum donation of cash or securities.
CHARITABLE REMAINDER TRUST OR LEAD TRUST	Designate Henry's Place as the beneficiary of a charitable remainder trust or charitable lead trust.
RETIREMENT BENEFITS	Name Henry's Place as a beneficiary of your retirement plan.
LIFE INSURANCE	Assign Henry's Place as a charitable beneficiary (or owner and beneficiary) of an existing or new policy.
BEQUEST	Include Henry's Place in your will for a specific amount, a percentage of your estate, or a remainder gift after bequests to individuals have been paid.

Notes:

- Please consult your tax advisor to determine tax implications of your gift.
- Gifts may be pledged over a multi-year period.
- Henry's Place is a 501(c)3 charity, tax ID #26-2603192